

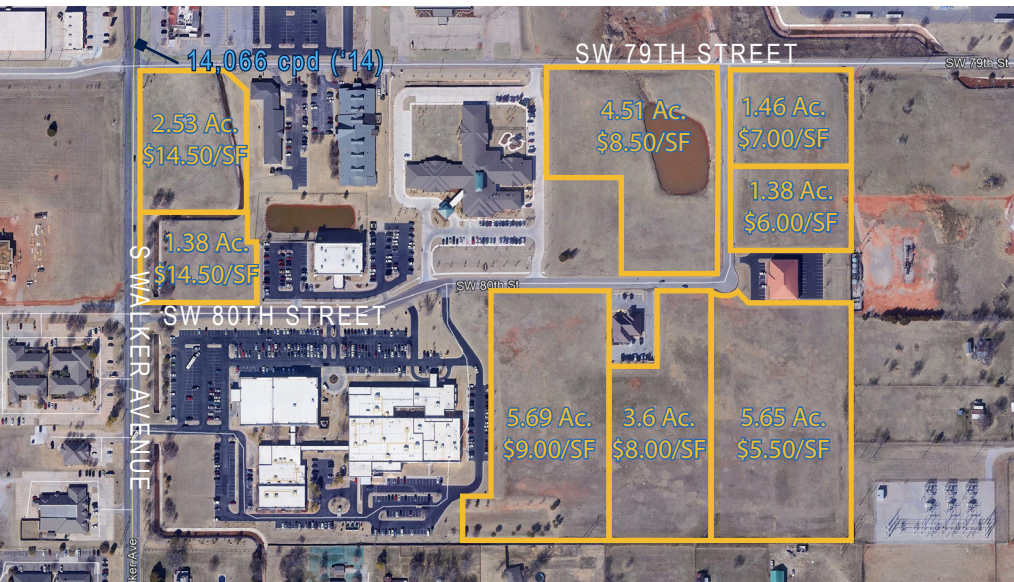
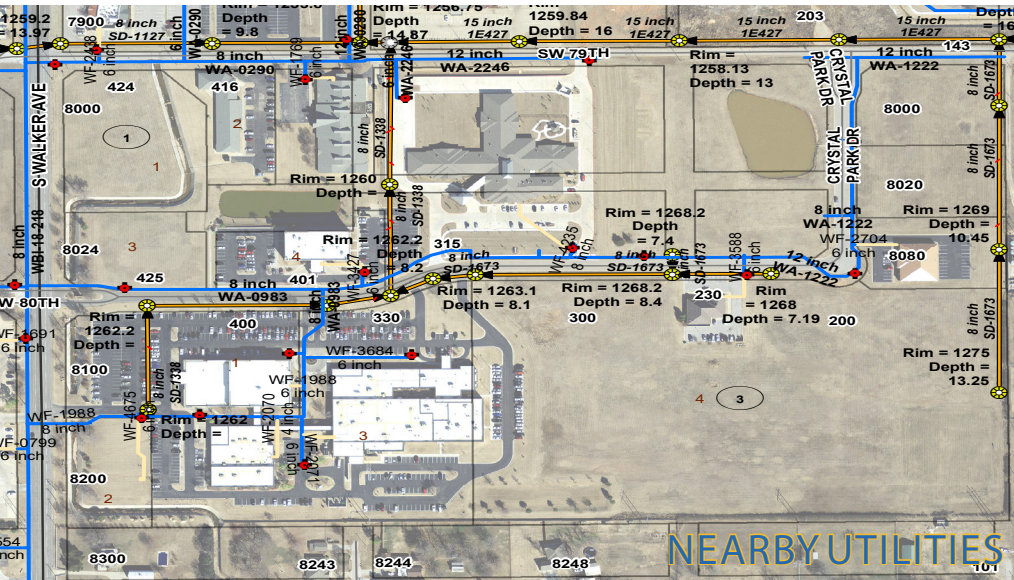


CRYSTAL PARK MEDICAL COMPLEX

26.2 ACRES LAND FOR SALE - OKLAHOMA CITY, OK

HEATHER BAKER
 hnbaker96@gmail.com
 O: 405.613.2992

CRYSTAL PARK MEDICAL COMPLEX



LAND FOR SALE

PROPERTY OVERVIEW

Located along the I-240 corridor, and less than 2 miles to I-35, this premier medical office park offers investors, and/or users, an excellent opportunity to develop a prime location in Oklahoma City.

The parcels sit within a well-manicured 55-acre medical complex, anchored by several well-established medical providers, and located just 10 minutes south of Downtown Oklahoma City.

Neighboring businesses include Southwest Orthopaedic Surgery & Reconstructive Specialists, Crystal Place Assisted Living Center, Physical Therapy Central, and medical professionals with specialties such as anesthesiology/pain management, neurology, general surgery, plastic surgery, gastroenterology, and oral/dental surgery.

DEMOGRAPHICS

	1 MILE	3 MILE	5 MILE
2019 Population	7,447	103,039	237,720
2024 Population (est.)	7,625	107,295	248,220
2019 Total Households	3,316	39,691	85,828
2019 Avg. Household Size	2.21	2.57	2.73
2019 Avg. Household Income	\$52,724	\$56,390	\$60,743
2019 Avg. Home Value	\$157,737	\$148,407	\$154,575

DETAILS

Land Size	26.2 Acres Total
Sale Price/SF	\$5.50- \$14.50
Zoning	PUD 846 & 985
Frontage	S Walker Ave & SW 80th Street

HIGHLIGHTS

- Build-to-suit available
- High traffic counts
- Great visibility, and ingress/egress points
- Close to prominent Oklahoma City medical facilities such as Southwest Orthopaedic Surgery & Reconstructive Specialists, Oklahoma Heart Hospital South